

# MSI Admin Tool User Guide

## Introduction

The MSI Admin Tool is a utility which allows you to pre-configure your Read&Write installation package prior to installation. The tool is primarily designed to be used in deployment scenarios where the Read&Write installation is running in a silent or unattended fashion.

Common deployment methods where this tool may be useful include Group Policy software deployment; automated application deployment via SMS Server; Microsoft System Essentials or any means of installation where the user interface has been reduced or removed using windows installer switches i.e. “msiexec setup.msi /qb”.

For scenarios where the installation is not being managed by an MSI deployment method the tool offers the ability to run the installation under a predefined set of user credentials giving restricted users the ability to install the software manually on their own work stations.

## Who should use this tool?

The MSI Admin Tool is designed as an aid to network Administrators or personnel responsible for the roll out and management of the Read&Write software in schools or organizations.

## How does it work?

The MSI Admin Tool is a database editor designed to edit information stored in the tables of an MSI database. Options available in the Read&Write installer may be preset via the MSI Admin Tool. The MSI Admin Tool will only edit information stored in a Read&Write MSI.

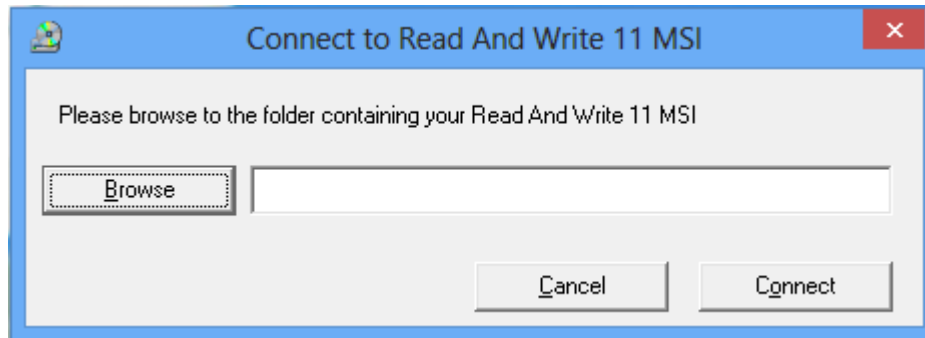
## Using the MSI Admin Tool

**Note: Before using the MSI Admin Tool we strongly recommend you read the “Read&Write Installation Guide”.**

1. Before you can use the MSI Admin Tool you must first download and un-zip the Read&Write installer from the Read&Write Essentials Website to a location where you have **READ/WRITE** access to it. This could be a folder on your local machine, a network share or directly to a software installation management point.
2. To run the MSI Admin Tool browse to Start\Programs\Texthelp\MSI Admin Tool and click on MSI Admin Tool. If running on Windows Vista or above you may be asked to input the login details of an Account that has Administrative access on

the local machine. The MSI Admin Tool will then ask you for a password. Enter the password that you choose during the MSI Admin Tool Installation.

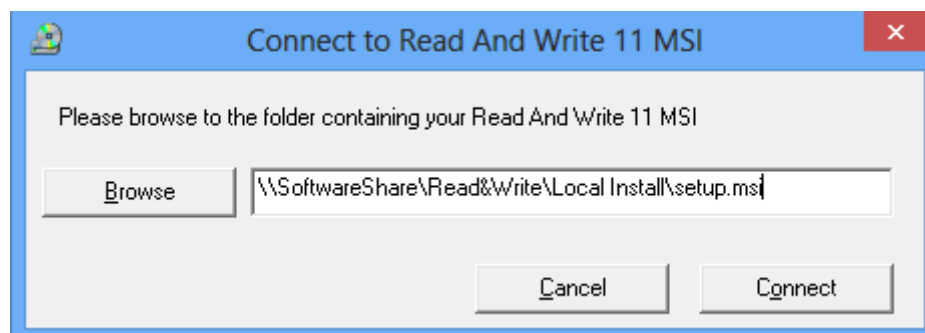
3. A dialog will then be displayed asking you to browse to the folder containing your Read&Write MSI. As shown in Figure 1.



**Figure 1**

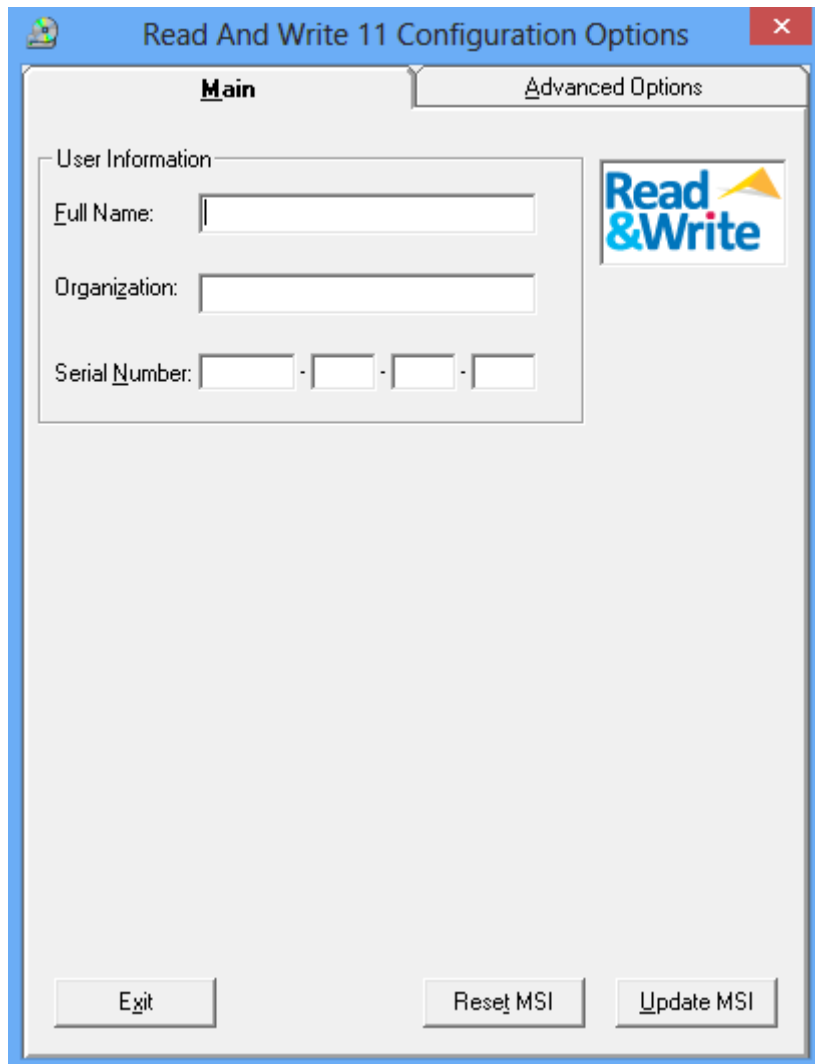
4. Type in or use the Browse Button to navigate to the folder containing the Read&Write installation you downloaded in step 1.

**Make sure the contents of the Read&Write installation folder is not marked as Read Only.**



**Figure 2**

5. Setup.msi will be appended onto the end of your selected path.
6. Press Connect. The MSI Admin Tool will attempt to connect to the Setup.msi using the path provided.
7. If connection was successful the options screen shown in Figure 3 will be displayed.

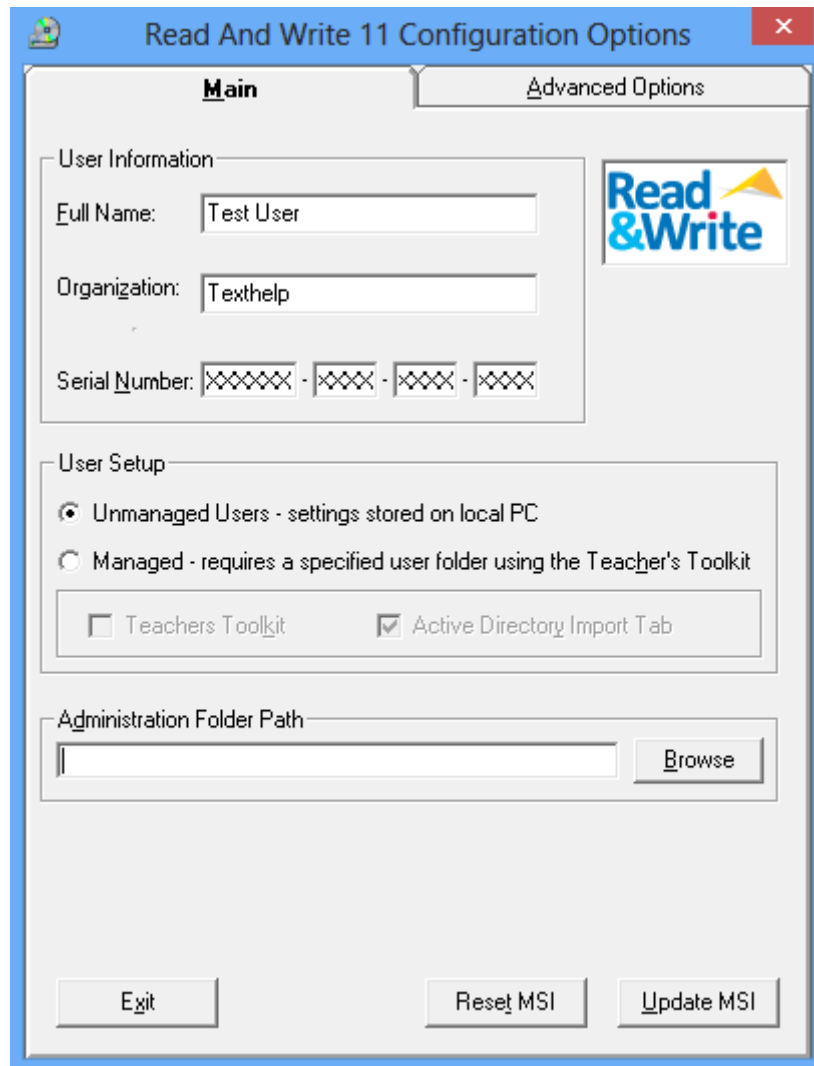


**Figure 3**

Figure 3 shows the MSI Admin Tool options prior to entering your Read&Write serial number. Input your Full Name, Organization and Serial Number. Once you have entered a valid serial number further options will become available.

**Note:** The MSI Admin Tool is designed to be used with “SITE” type serial numbers. If you enter a “Single User” serial number no further options will be available.

Figure 4 shows the User Setup options available after a valid serial number has been entered.



**Figure 4**

### **User Setup**

Read&Write can be installed in two different modes, Unmanaged and Managed. In Unmanaged mode the users' Read&Write settings and logs are stored in their Documents and Settings folder on the local machine. These settings cannot be managed by the Teachers Toolkit. In managed mode the users' settings are stored in a defined network location. These settings can be managed via the Teachers Toolkit.

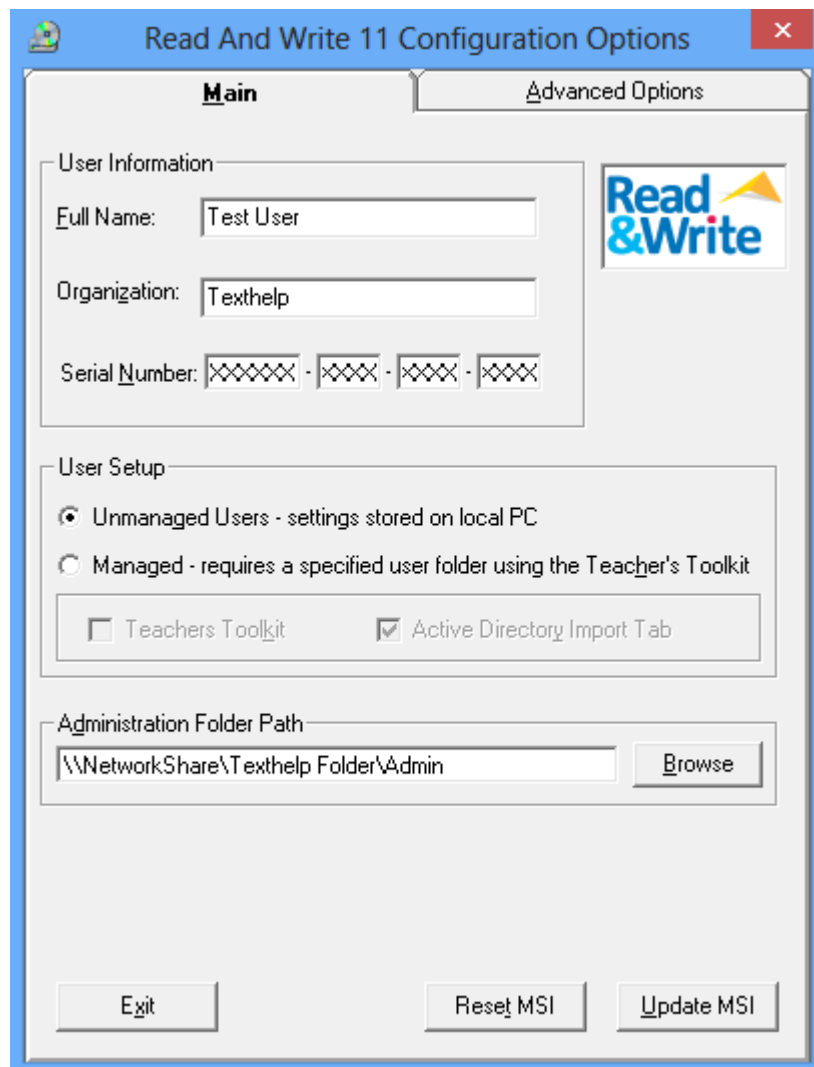
Please refer to the Read&Write installation guide for more information on installation modes.

## Unmanaged Mode

If installing Read&Write in Unmanaged mode you must provide a path to the Admin Folder. The Admin folder must exist on a network share which is accessible by all machines running Read&Write.

**Note:** The Admin folder is not created by Read&Write. You must create the folder manually before selecting it.

Figure 5 shows the MSI Admin Tool configured to install Read&Write in Unmanaged mode.



**Figure 5**

## **Managed Mode**

If installing Read&Write in Managed mode then one instance of the Teachers Toolkit will need to be installed.

**Note:** Do not enable the Teachers Toolkit for installations that are to be installed on students machines, the Teachers Toolkit should only be installed for those responsible for the configuring and collection of user's settings and logs.

For this reason we recommend you host two separate copies of the installer. Configure one for users' machines which does not include the toolkit and one for teacher's machines which does include the toolkit.

If installing the Teachers Toolkit you may wish to disable the Active Directory Import tab. If this option is selected, installations of the Teachers Toolkit will not have the ability to view or add users from the active directory. For more information on this topic please read the Teachers Toolkit Guide.

## **Folder Paths**

In Managed mode you must provide a path to both the Admin Folder and Users folder. These folders should exist on a Network Share and be accessible by all machines running the Read&Write software.

**Note:** The Admin and User folders are not created by Read&Write. You must create the folders manually before selecting them.

Figure 6 shows an installation being configured to install in Managed mode together with the Teachers Toolkit (recommended for teachers).

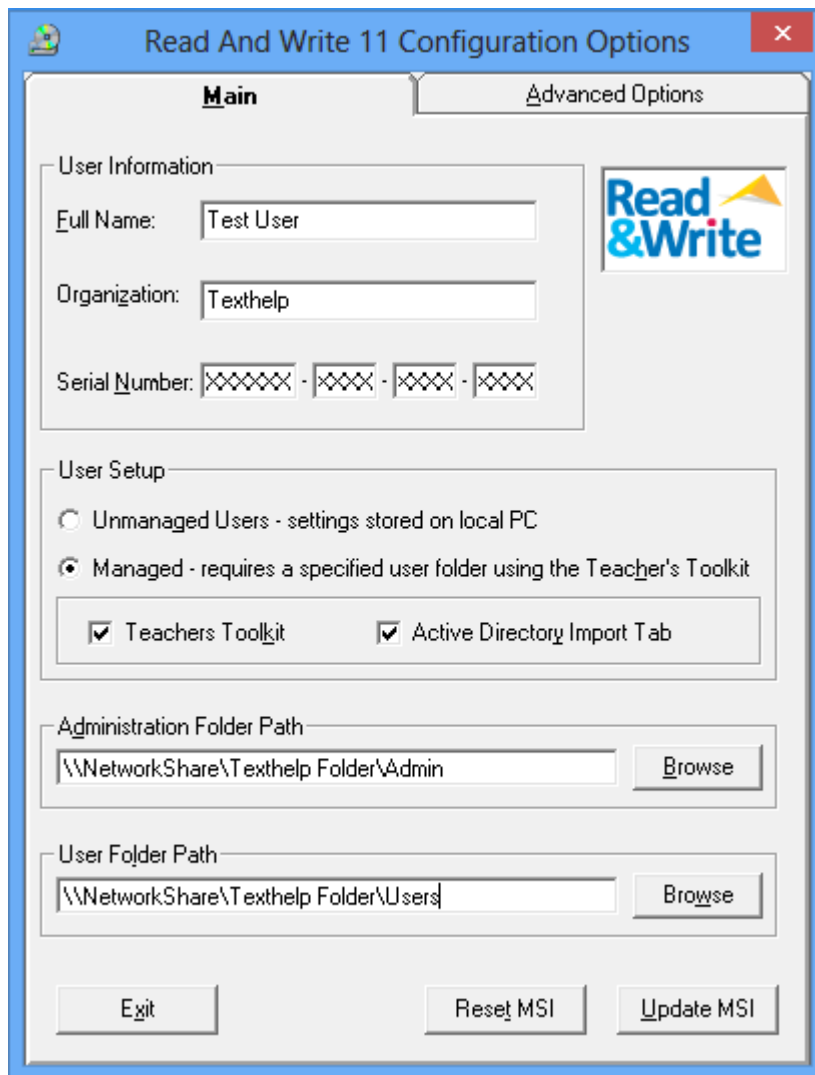
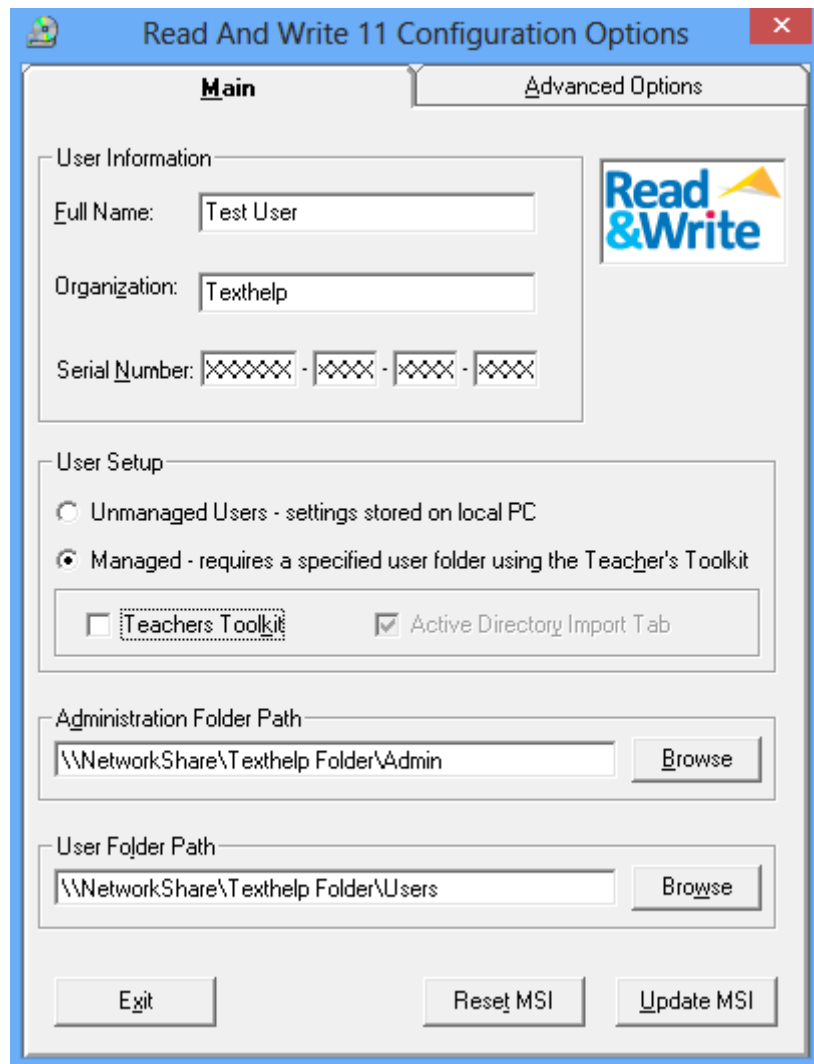


Figure 6

Figure 7 shows an installation being configured to install in multi user mode without the Teachers Toolkit (recommended for students).



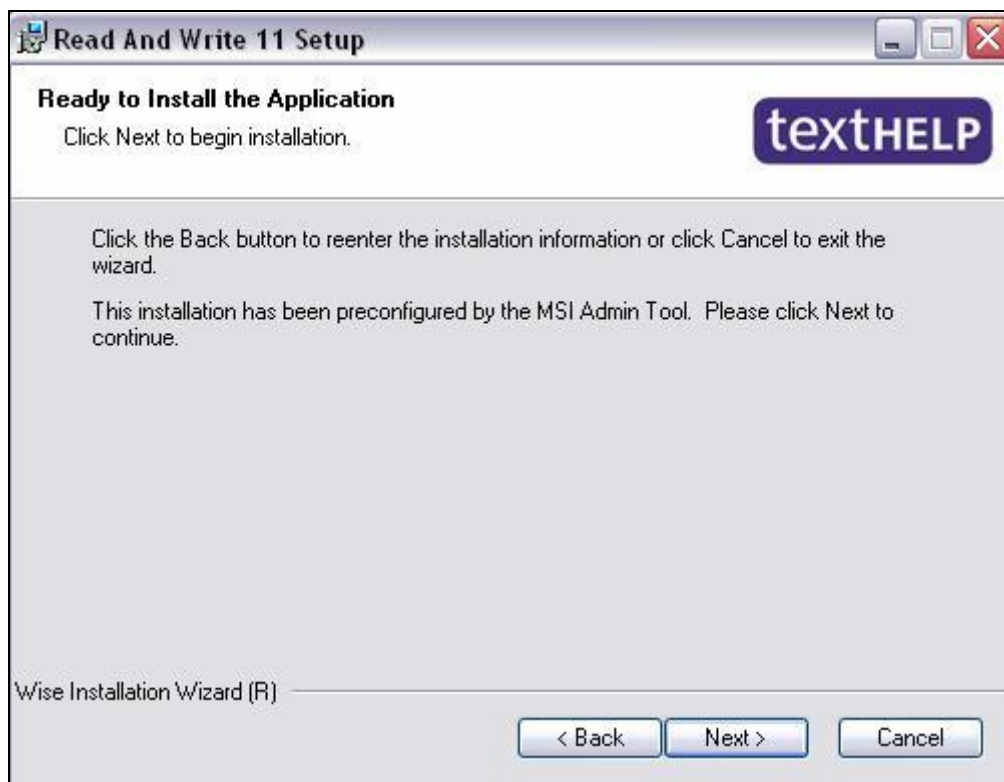
**Figure 7**

Once you have configured the installation with your desired settings press the Update MSI button. Your Read&Write installation has now been updated. Users can install Read&Write by running either Setup.exe or Setup.msi manually. Users will not have to input a serial number or select any options during install as they have been pre-configured.

If deploying Read&Write, copy the installer to a software distribution point and publish the software for deployment. If using a software deployment method that only supports the distribution of MSI's such as MS Group Policy then the target machines will need to have the Microsoft .Net framework version 4 installed. If your software deployment method supports the distribution of .EXE files then installing via Setup.exe will also install the Dot Net Framework.



Figure 8 shows the Read&Write installation being run manually after pre-configuration via the MSI Admin Tool.



**Figure 8**

## Optional Advanced Settings

The MSI Admin Tool also comes with some advanced options which may be used to give you further control over the installation process.

Figure 9 shows the advanced options screen.

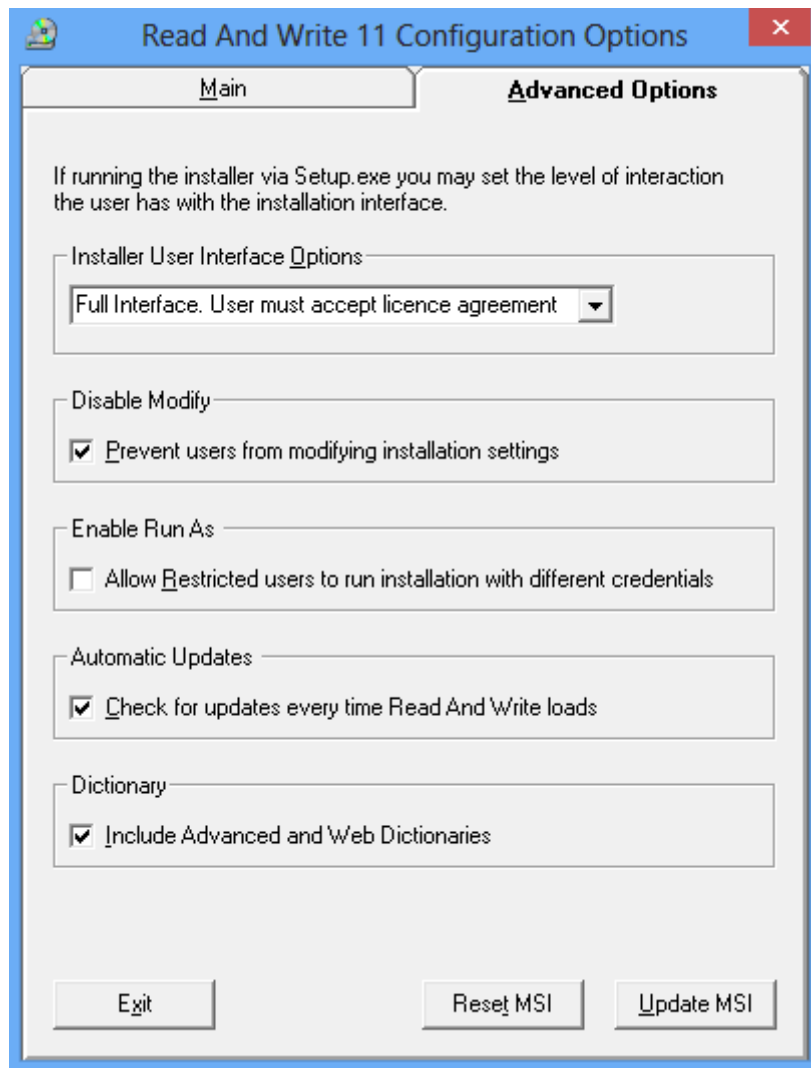


Figure 9

### Installer User Interface options

After the Read&Write installer has been configured via the MSI Admin Tool the user is unable to make changes to the installation options, however if installing via a batch file or script, you may wish to further reduce the level of user interaction required. To do this you may select to run the installation either with a basic interface or no interface at all.

**Note:** This option only applies if running the installation via Setup.exe not via Setup.msi.

## **Disable Modify**

This option prevents users from making changes to the installation at install time. (Recommend)

## **Automatic Updates**

If you wish to not receive updates you can do so by unselecting the “Check for updates every time Read And Write loads”. However it is advisable to keep this selected so you do not miss new features or critical updates.

## **Install Advanced and Web Dictionaries**

If you wish to block access to the advanced and web dictionaries you can do so by unselecting the “Include Advanced and Web Dictionaries” option.

## **Enable Run As**

The Read&Write installation ships as an MSI so therefore supports all managed MSI deployment methods such as Group Policy software deployment, Microsoft Systems Management Server, Microsoft Systems Essentials etc. When software is deployed using these methods the installation runs using an elevated account allowing users with limited access rights on their systems to install the software.

Texthelp recommends you use a known MSI deployment method when deploying Read&Write to client machines, however in situations where you cannot use a common MSI deployment method or one is not available the MSI Admin Tool gives you the ability to specify an account you wish to use to run the installation.

The account you specify must have software installation rights on all the client machines that you wish to install the software on.

Once enabled users who do not have local admin rights on their machines can install Read&Write via the AdminInstall.exe provided in the Read&Write installation path.

**Note this functionality uses the Windows secondary login service which must be enabled on target systems.**

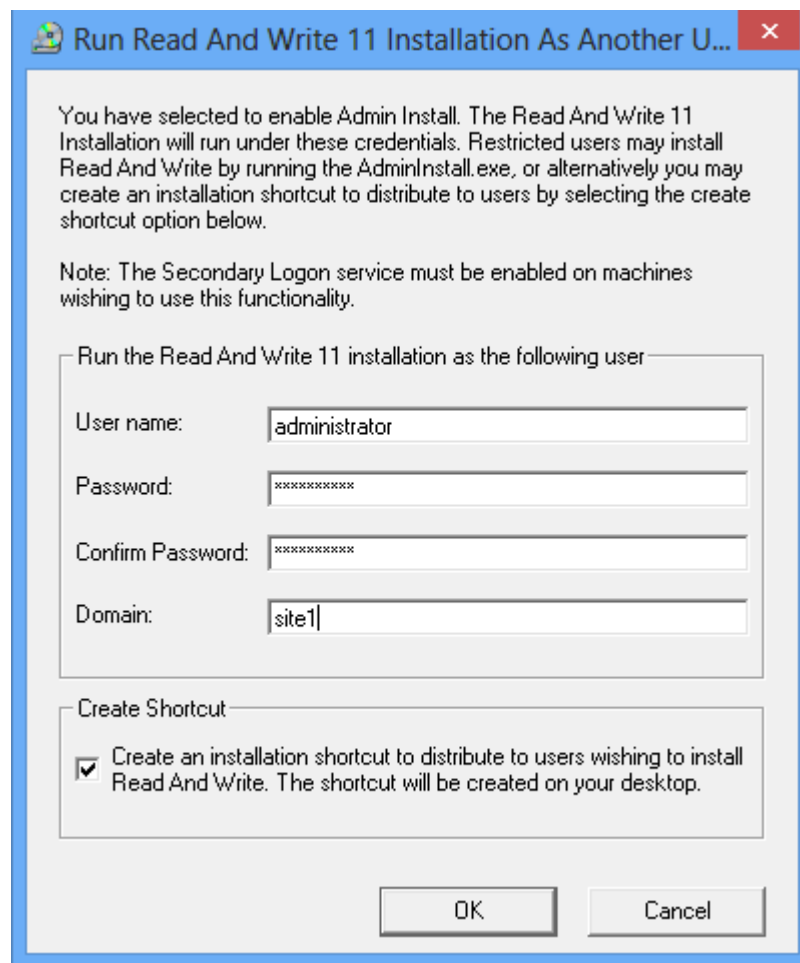
To enable the “Run As” functionality, tick the “Allow restricted users to run installation with different credentials” check box and press Update MSI. A window will appear as shown in Figure 10.

Texthelp recommends that you create a temporary user account with correct permissions to install software on client machines and delete the account after the software has been installed.



**Figure 10**

Enter User account credentials for a user who has software installation rights on the target machines as shown in Figure 11.



**Figure 11**

Once you have entered the user account information press OK to update the Read&Write installation.